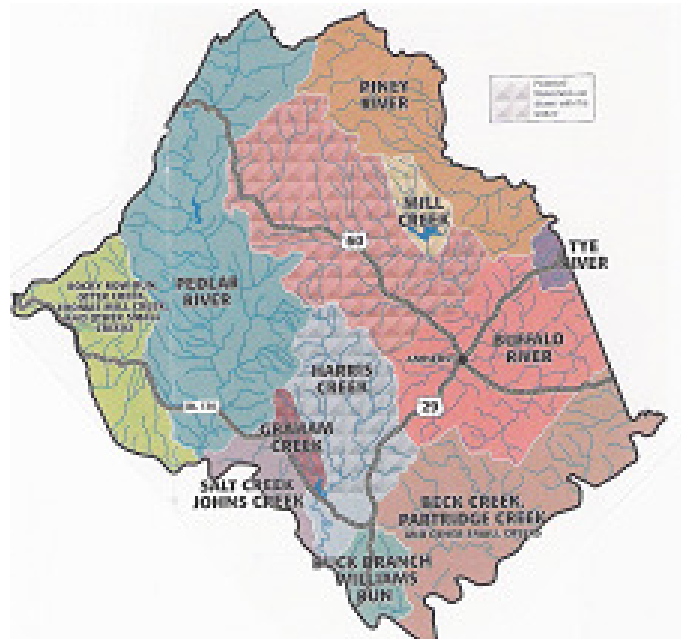


Amherst County's Protected Watersheds

If your property is within the boundaries of the protected watershed (drinking water supply) for Amherst County the Amherst County Service Authority will provide an additional 25% cost-share onto the 75% cost-share paid by the selected conservation program. The participant would be eligible to receive **100% cost-share** to implement a conservation practice in the protected watersheds.



Legend for Protected Watershed's Boundaries (shown on map *with texture*)

Yellow square	Mill Creek
Red square	Buffalo River
Blue square	Harris Creek
Dark red square	Graham Creek

Conservation Programs eligible for Local Grant Funds

Chesapeake Bay Cost-Share Program <http://www.dcr.state.va.us/>

- 75% cost-share on conservation practices (approved conservation plan)
- Reforestation options available
- Design and layout of practice provided

- You choose the contractor for the installation of the practice
- Reimbursement for soil samples in the protected watersheds
- Practices are ranked
- Application deadlines- Begins June 1, Ends July 1
- Extensions granted by request based on practice types/time requirements

Wildlife BMP Cost-Share Program

- \$7500 landowner cap for Bay Drainage/\$3500 cap for non-Bay Drainage
- Separate funding components for practices (idle land, stream protection, etc...)

Virginia Tax Credit Program

- 25% credit on State Income Tax for "out of pocket"/ in-kind services
- Must have approved conservation plan
- Practices must be completed and approved within the taxable year
- All bills/receipts by year end for credit (i.e. December 2006 for 2007)
- Spread out over 5 years (must take minimum deduction each year)

NRCS Programs

<http://www.nrcs.usda.gov/>

EQIP (Environmental Quality Incentive Program)

- Long term contracts for multiple practice installation (5 year minimum)
- Identical practices/specifications as offered through Chesapeake Bay Program

FIP (Forestry Incentive Program)

- Reforestation of agricultural and forested lands

WHIP (Wildlife Habitat Incentive Program)

- Wildlife planting/buffer management for agricultural lands

CRP (Conservation Reserve Program)

- Rental payments provided based on bid (determined by the Federal Government)
- 10 year "no harvest" (includes haying or grazing)

<i>Applicable Practices</i>	Tax Credit	Cost-Share
Reforestation of Erodible Crop and Pasture Land	X	X
Woodland Buffer Filter Area	X	X
Woodland Erosion Stabilization	X	X
Permanent Vegetative Cover on Cropland (3 of 10 years)	X	X
(crop reports or conservation plan required for verification; grass or legume vegetation on lands of 60% or less cover)		
Permanent Vegetative Cover on Cropland (3 of 10 years)		X
(native warm season grasses on lands of 60% or less cover)		
Grazing Land Protection		
(watering systems and fencing [exclusion, limiting or rotational])	X	X
Alternative Watering System	X	
Permanent Vegetative Cover on Critical Areas	X	X
(gully/ "washout point" stabilization)		
Farm Road or Heavy Animal Traffic Lane Stabilization	X	
(stabilizing travel way banks, stream crossings, etc.)		
Idle Land (3 years successional to reduce erosion)	X	X
Fescue conversion (to native warm season grass)		X
Stream bank Protection	X	X
Stream Crossings and Hardened Access	X	
Stream Channel Stabilization	X	
Vegetation Establishment for Stream Protection		X
Relocation of Confined Feeding Operation	X	
Constructed Wetlands	X	
Wetlands Restoration	X	
Capping/Plugging of Abandoned Wells	X	



For more information please contact: Anne Marie Clarke, Watershed Coordinator at:
(434) 851-7043 or email at: anne.clarke@vaswcd.org

